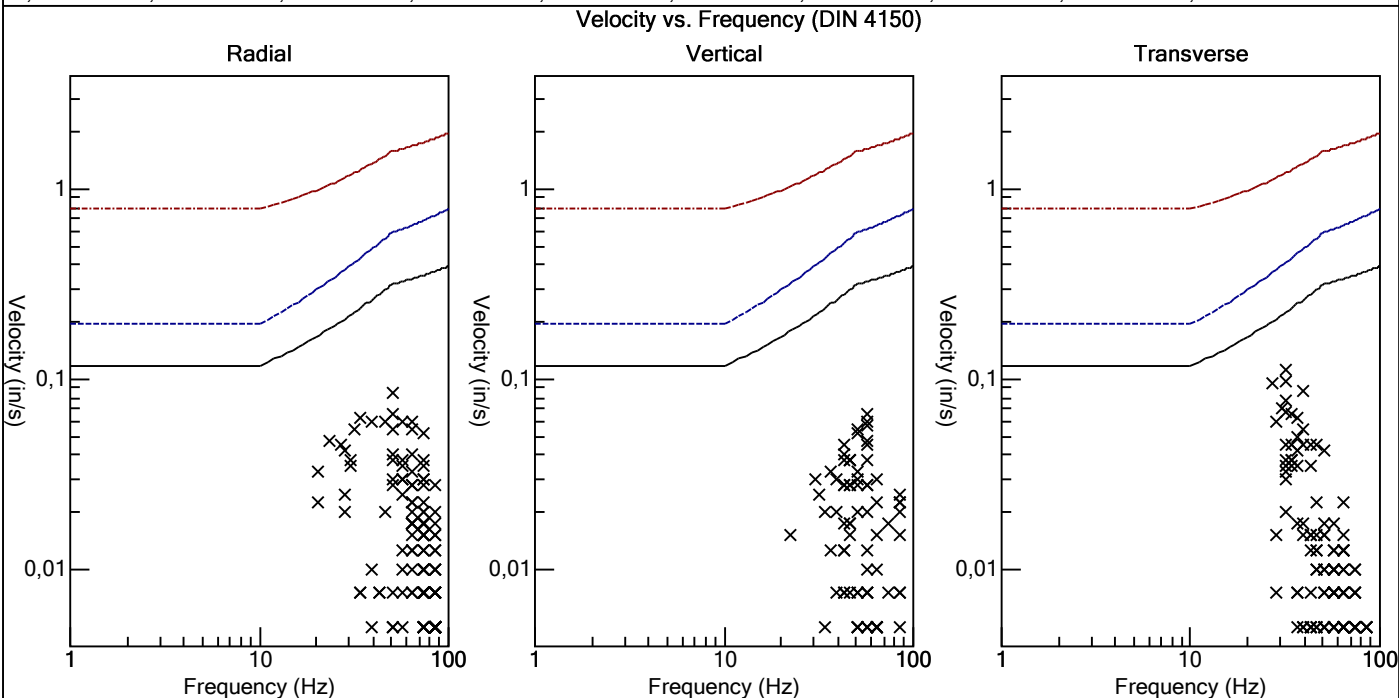
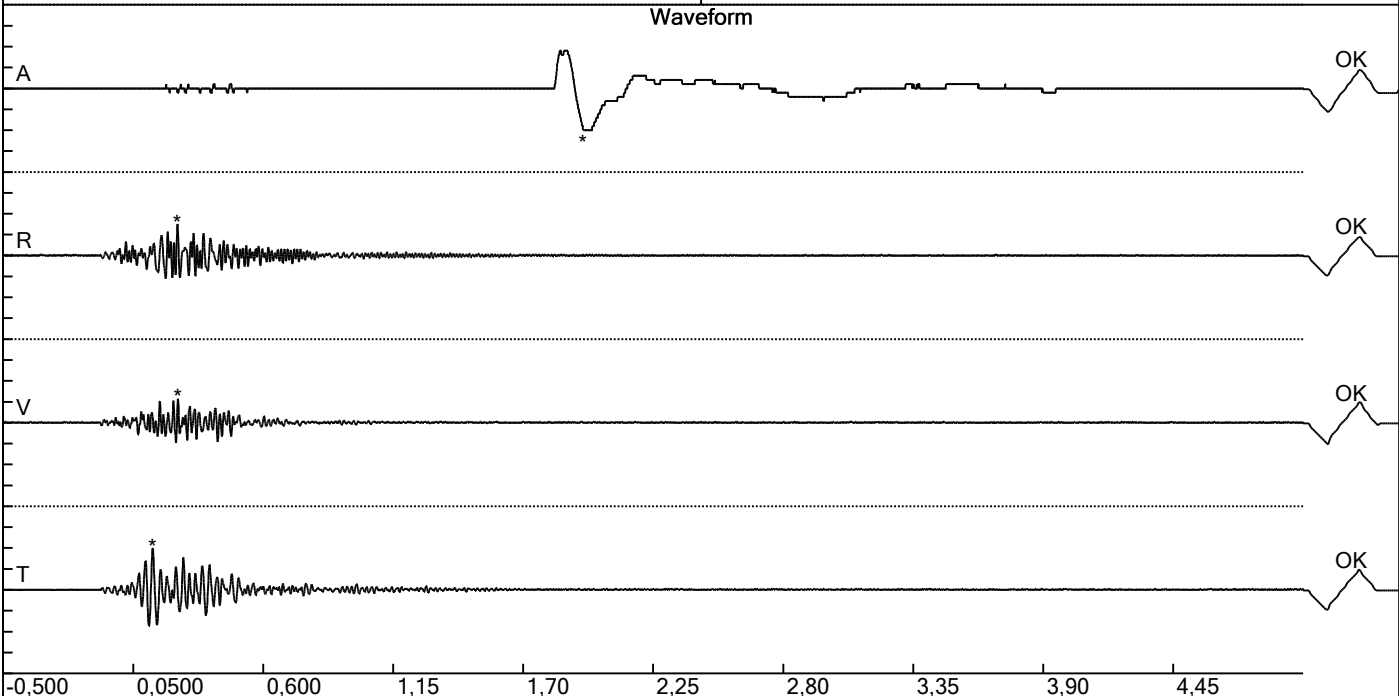


Carrière de BRS
 Aywaille -4 (élargissement rampe)
 Tir du 02/06/2017
 Sismographe placé au
 261 Halleux
 4710 Comblain-au-Pont

Record: 2164201706021357064.dtb
 Number: 064
 Seismograph: Mini-Seis
 Type of Record: Waveform
 Date: 2/06/2017 01:57:00
 SN: 2164
 Duration: 5,50 Seconds
 Sample Rate: 1024
 Pre-Trigger: 0,5 Seconds
 Seismic Trigger: 0,0200 in/s
 Acoustic Trigger: 142,1 dB
 Voltage: 6,5

Peaks and Frequencies	Graph Information
PPV Maximum: 0,113 in/s Acoustic: 120,0 dB @ 2,3 Hz (1,95 s) Radial: 0,0850 in/s @ 51,2 Hz (0,237 s) Vertical: 0,0650 in/s @ 56,8 Hz (0,239 s) Transverse: 0,113 in/s @ 32,0 Hz (0,132 s) Last Calibration Date: 21/04/2015	Time Range: -0,500 s to 5,00 s Acoustic Scale: 0,100 Mb/div Seismic Scale: 0,0565 in/s/div Time Intervals: 0,550 Seconds



Carrière de BRS
 Aywaille -4 (élargissement rampe)
 Tir du 02/06/2017
 Sismographe placé au
 261 Halleux
 4710 Comblain-au-Pont

Record: 2164201706021357064.dtb
 Number: 064
 Seismograph: Mini-Seis
 Type of Record: Waveform
 Date: 2/06/2017 01:57:00
 SN: 2164
 Duration: 5,50 Seconds
 Sample Rate: 1024
 Pre-Trigger: 0,5 Seconds
 Seismic Trigger: 0,0200 in/s
 Acoustic Trigger: 142,1 dB
 Voltage: 6,5

Peaks and Frequencies	Graph Information
PPV Maximum: 0,113 in/s Acoustic: 120,0 dB @ 2,3 Hz (1,95 s) Radial: 0,0850 in/s @ 51,2 Hz (0,237 s) Vertical: 0,0650 in/s @ 56,8 Hz (0,239 s) Transverse: 0,113 in/s @ 32,0 Hz (0,132 s) Last Calibration Date: 21/04/2015	Time Range: -0,500 s to 5,00 s Acoustic Scale: 0,100 Mb/div Seismic Scale: 0,0565 in/s/div Time Intervals: 0,550 Seconds

